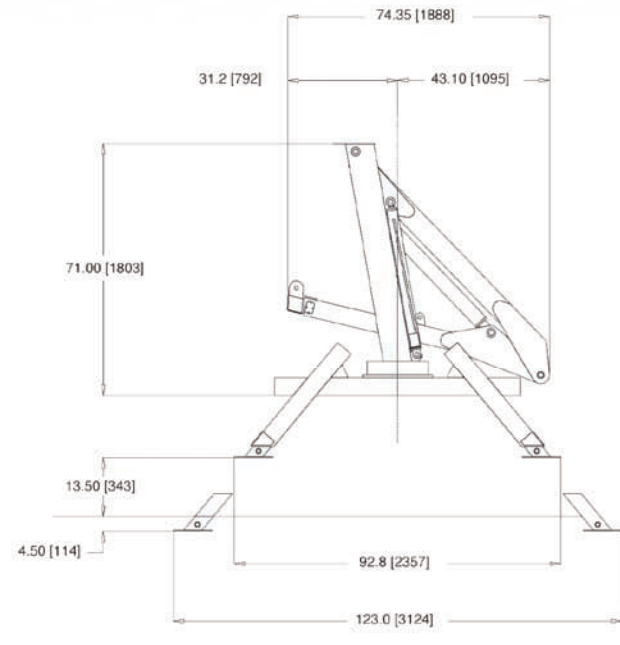
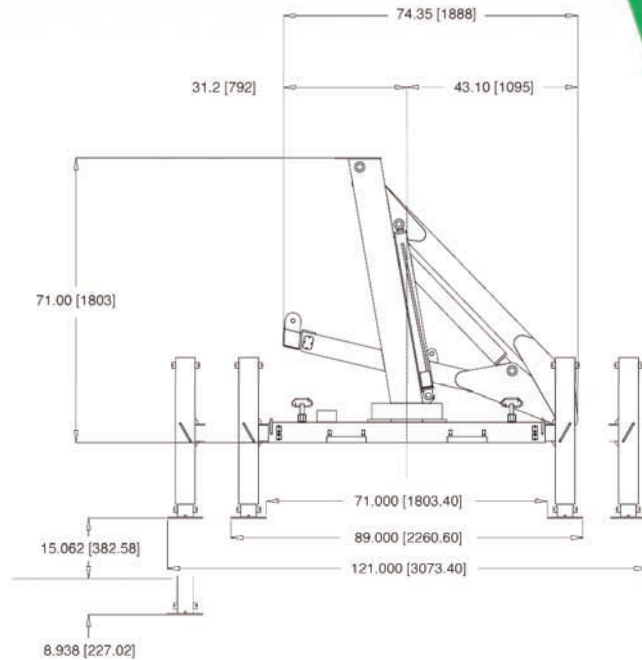


BASE CONFIGURATION OPTIONS

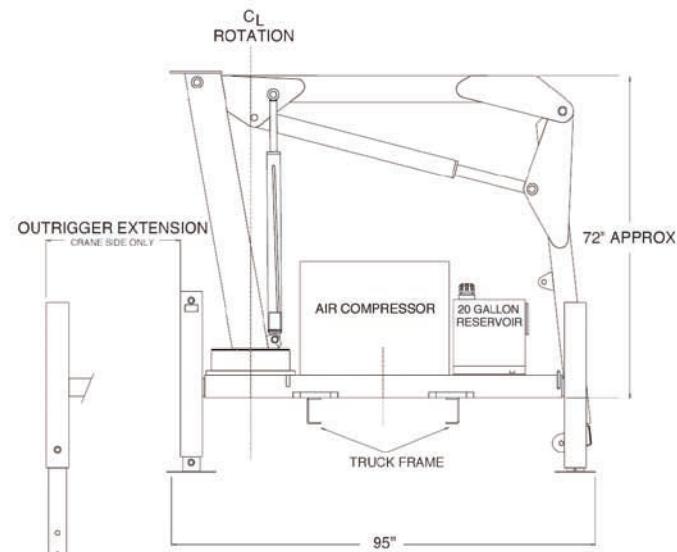
CENTER MOUNT WITH A-FRAME TYPE OUTRIGGERS



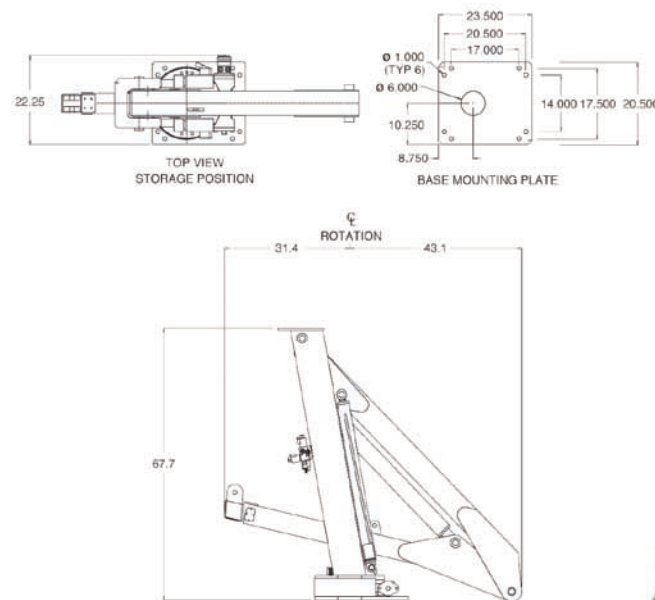
CENTER MOUNT WITH H-FRAME TYPE OUTRIGGERS



CORNER MOUNT WITH H-FRAME TYPE OUTRIGGERS



PEDESTAL MOUNT BASE H-FRAME TYPE OUTRIGGERS



HFC-3000 SERIES

GENERAL SPECIFICATIONS

	MODEL 3016		MODEL 3019	
CRANE CAPACITY RATING	30,000 ft. lbs.	4.15 TM	30,000 ft. lbs.	4.15 TM
MAXIMUM REACH (FROM CENTERLINE)	15' 6"	4.57 m	19'	5.79 M
TIP HEIGHT*	23' 10"	7.26 m	27' 1"	8.25 M
HYDRAULIC EXTENSION	42"	106.6 cm	42"	106.6 cm
MANUAL EXTENSION	-	-	42"	106.6 cm
ROTATION (STANDARD)	370°			
CRANE WEIGHT	1800 lbs.	816.7 kg	1900 lbs.	862 kg
STORAGE HEIGHT (CRANE ONLY)	71"	180.3 cm	71"	180.3 cm
STORAGE WIDTH (BOOM ONLY)	74.35"	188.8 cm	77.5"	196.85 cm
OUTRIGGER SPAN (SEE BASE CONFIGURATION DRAWINGS)				
MOUNTING SPACE REQUIRED**	23.50"	59.7 cm	23.50"	59.7 cm
MINIMUM PUMP CAPACITY/MINUTE	4 gal	15.2 L	4 gal	15.2 L
OIL TANK CAPACITY (CRANE ONLY)	10 gal	37.9 L	10 gal	37.9 L

*LIFT HEIGHT WHEN MOUNTED ON 34" (86.4 cm) HIGH TRUCK FRAME.
 **ALLOW MINIMUM 1.5" (3.8 cm) ADDITIONAL BETWEEN CAB AND CRANE FOR ROTATION CLEARANCE. DISTANCE MAY VARY BY TRUCK MODEL.

CYLINDER DATA

	BORE	STROKE
MAIN BOOM CYLINDERS	2.75" (6.9 cm)	30.125" (76.5 cm)
FOLDING BOOM CYLINDERS	3.5" (8.9 cm)	34.312" (87.2 cm)
EXTENSION CYLINDER	2.5" (5.1 cm)	42.00" (106.7 cm)
STABILIZER DOWN CYLINDERS	2.0" (5.1 cm)	24.00" (61.0 cm)
STABILIZER EXTEND CYLINDERS	1.5" (3.15 cm)	

OPERATION DATA

ROTATION 370°	30 SECONDS
MAIN BOOM ELEVATION	23 SECONDS
KNUCKLE BOOM ARTICULATION	22 SECONDS
BOOM EXTENSION	13 SECONDS
STABILIZER EXTENSION	5 SECONDS EACH

SPEEDS ASSUME 4 GPM FLOW AND NO LOAD CONDITION.



RECOMMENDED TRUCK CHASSIS

	CAB STYLE	
	CONVENTIONAL	CABOVER
WHEELBASE	161" (4089 mm)	132" (3353 mm)
CAB TO AXLE DISTANCE (CA)	84" (2134 mm)	110" (2794 mm)
FRONT AXLE RATING	5000 lbs.	2268 kg
REAR AXLE RATING	9500 lbs.	4309 kg
GROSS VEHICLE WEIGHT RATING	14500 lbs.	6577 kg
FRAME SECTION MODULUS	11 cu in	181 cc
RESISTING BENDING MOMENT (RBM)	396,000 in lbs.	4564 kg m

STANDARD PERFORMANCE FEATURES

COUNTERBALANCE SAFETY VALVES

The main (inner) boom and knuckle (articulating) boom cylinders are equipped with pilot operated counterbalance valves integral to the cylinder on the load holding sides. The stabilizer and boom extension cylinders are equipped with dual pilot operated check valves.

The counterbalance valves positively hold the load during normal operations. The valves additionally provide protection from collapse in event of a hydraulic system failure or hose break. The counterbalance valves further control the metering of lowering functions and provide thermal relief protection in event of hydraulic oil expansion due to ambient temperature conditions.

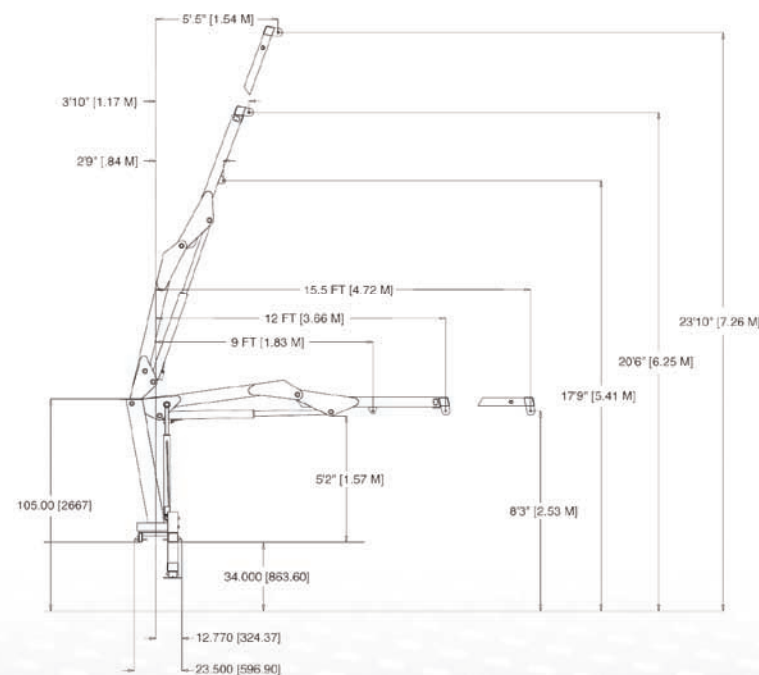
The dual pilot operated check valves positively lock the cylinder in position until the operator intentionally controls that function.

OPTIONS

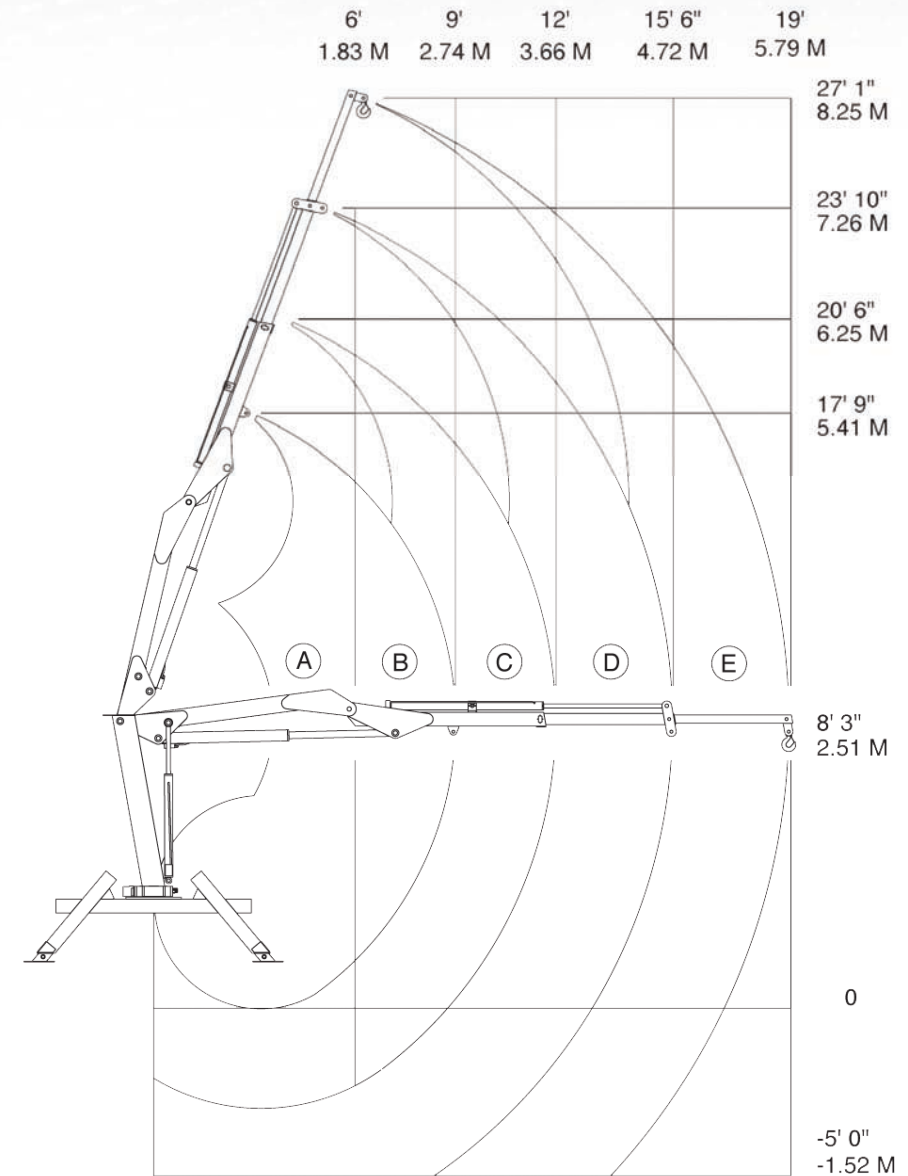
ACTIVE OVERLOAD – Provides hydraulic cutout of extension functions in event of overload condition. System is fully hydraulic and resets automatically.

REMOTE CONTROL – Provides remote control capability. 30 foot hard wired (cable) provides remote control operation of all crane functions except outriggers. Mil-spec sealed bushing toggle switches provide long life in harsh environments. Proportional speed controller allows operator to also remotely control crane function speeds. A wireless (radio control) version is also available.

DIMENSIONAL CONFIGURATION



HFC-3019 WORKING RANGE / CAPACITY CHART



HFC-3019 CAPACITY CHART

AREA	REACH	CAPACITY	AREA	REACH	CAPACITY	AREA	REACH	CAPACITY
A	6 ft.	5000 lbs.	C	12 ft.	2500 lbs.	E	19 ft.	1000 lbs.
	1.83 m	2268 kg		3.66 m	1134 kg		5.79 m	453 kg
B	9 ft.	3333 lbs.	D	15 ft.	1935 lbs.			
	2.74 m	1512 kg		4.57 m	878 kg			